

BRUNTON

RESIDENTIAL



FEATHERWOOD AVENUE, NEWCASTLE UPON TYNE

£1,250 Per Month

BRUNTON

RESIDENTIAL





BRUNTON

RESIDENTIAL



BRUNTON

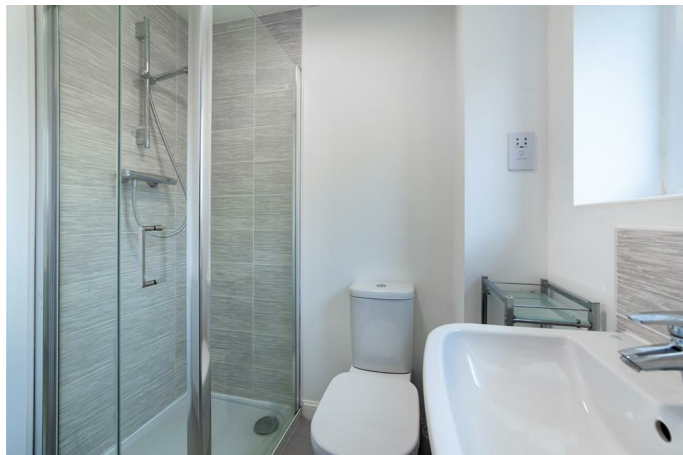
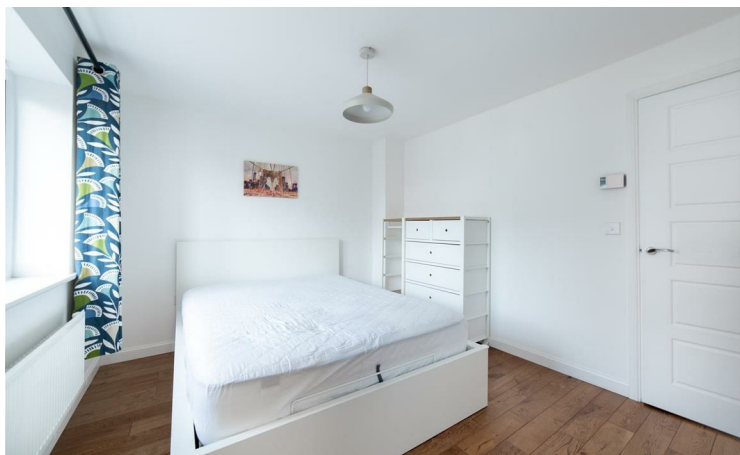
RESIDENTIAL



*** 360 VIRTUAL TOUR *** - Available 16/05/2026- Rent £1250pcm - New build house in 2015 - 3 bed detached house - Large living room with patio doors to the private garden - Modern kitchen - Family bathroom - Main bedroom with en-suite - Additional WC - Off-street parking for 2 car and additional parking for a 3rd - Large private rear garden.

BRUNTON

RESIDENTIAL



BRUNTON

RESIDENTIAL



BRUNTON

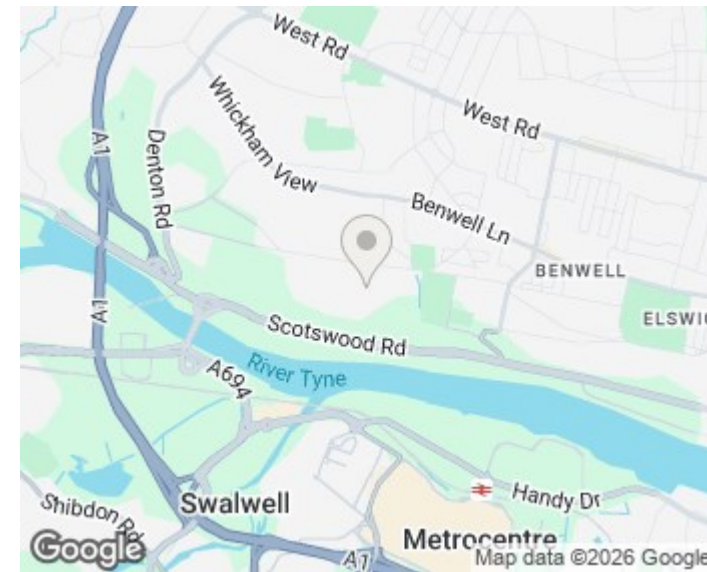
RESIDENTIAL

TENURE :

LOCAL AUTHORITY : Newcastle

COUNCIL TAX BAND : B

EPC RATING : B



Energy Efficiency Rating		Current	Potential
Very energy efficient - lower running costs			
(92 plus) A			93
(81-91) B		81	
(69-80) C			
(55-68) D			
(39-54) E			
(21-38) F			
(1-20) G			
Not energy efficient - higher running costs			
England & Wales		EU Directive 2002/91/EC	

Environmental Impact (CO ₂) Rating		Current	Potential
Very environmentally friendly - lower CO ₂ emissions			
(92 plus) A			
(81-91) B			
(69-80) C			
(55-68) D			
(39-54) E			
(21-38) F			
(1-20) G			
Not environmentally friendly - higher CO ₂ emissions			
England & Wales		EU Directive 2002/91/EC	